

Charts and Graphs

- Tables
- Charts and Graphs
- Organizational Charts

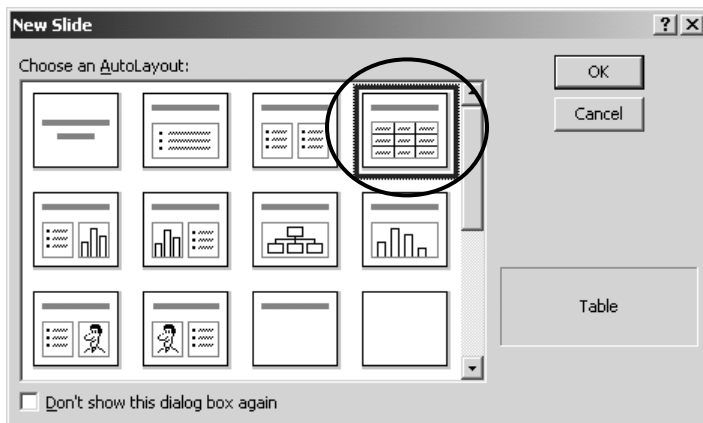
Tables

- Insert a table
- Add rows and columns
- Resize rows and columns
- Adding data and moving around
- Formatting cells

Table

Dentistry	Health Professions	Medicine	Nursing	Pharmacy	Veterinary Medicine
500	750	450	800	400	590
250	300	570	300	450	400

Create a Table

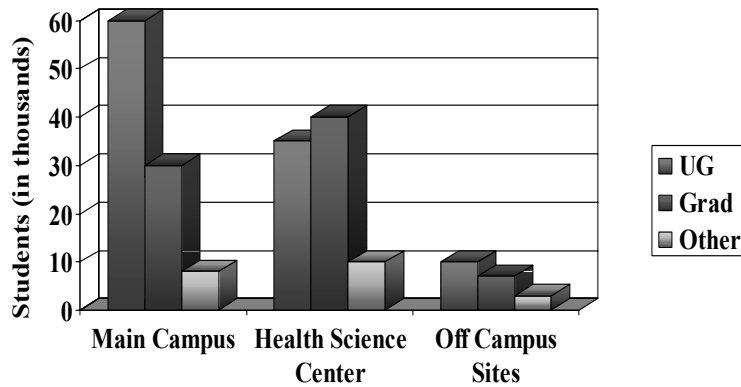


Charts

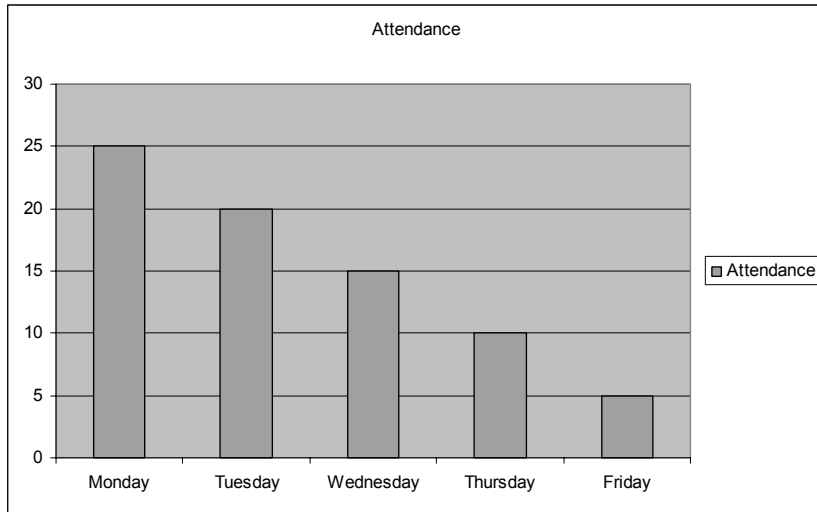
- Insert a chart
 - Data
 - Options
 - Colors
- Inserting an Excel chart

PowerPoint Chart

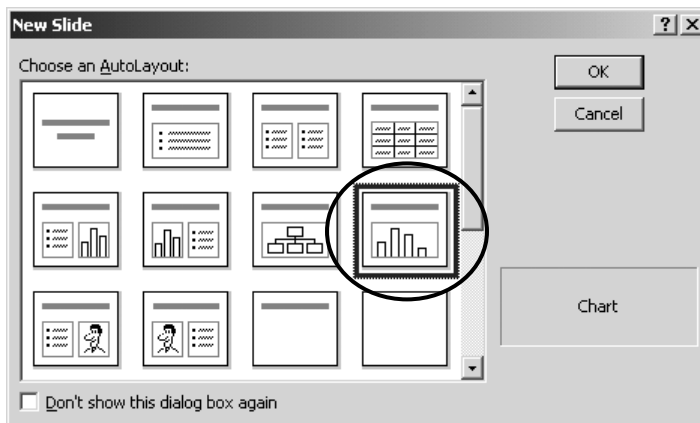
**Totally False Enrollment
The University of Florida**



Excel Chart

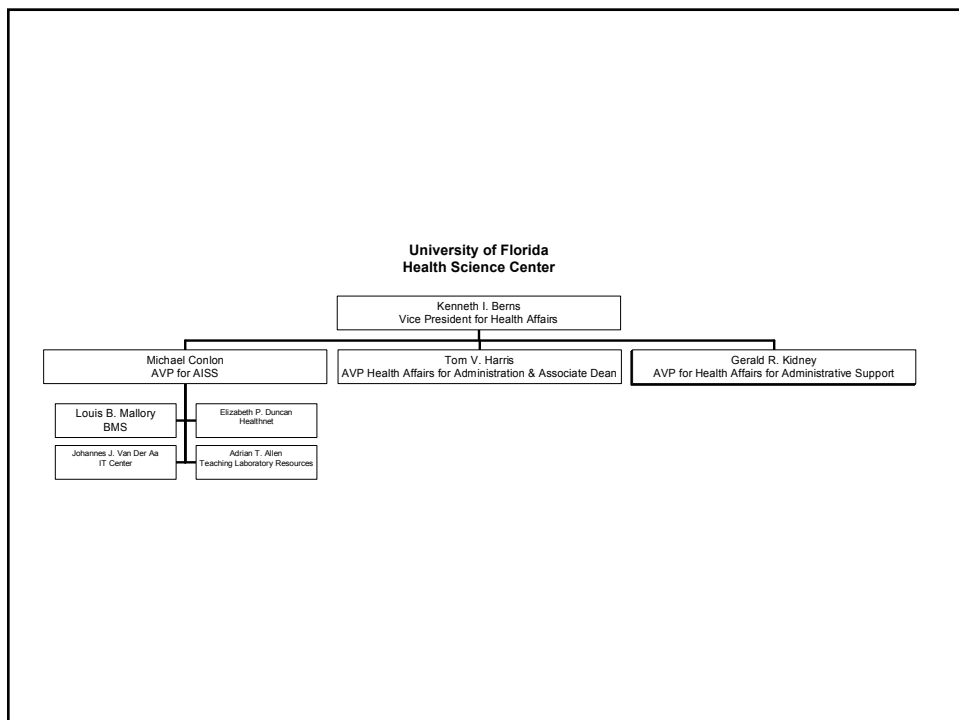


Create a Chart

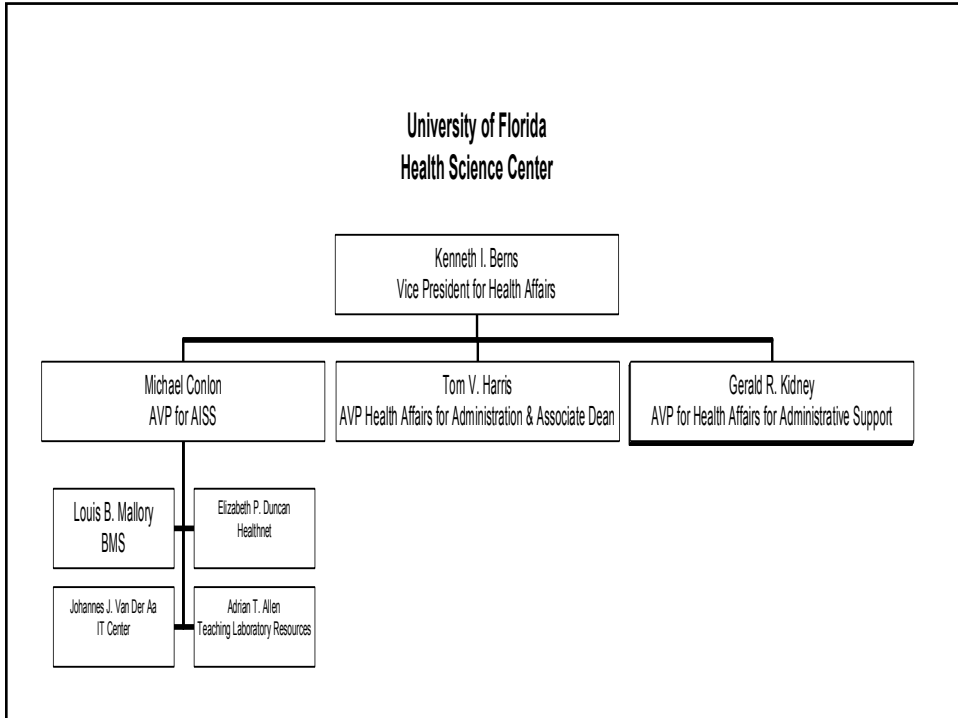


Organizational Charts

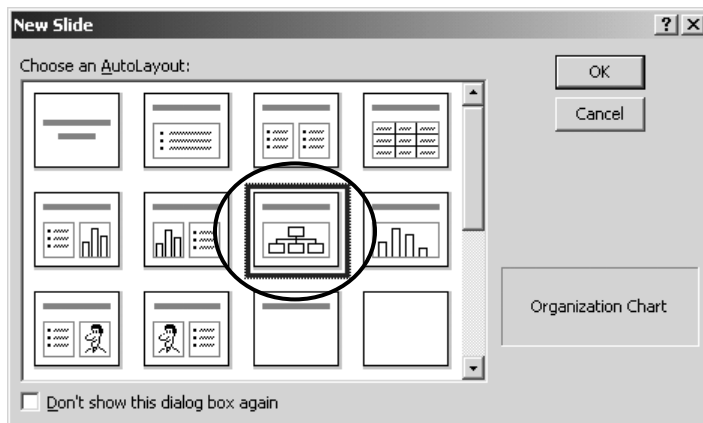
- Insert an organizational chart
 - Adding and removing boxes
 - Moving boxes
 - Formatting boxes
- Using auto shapes
 - Organizational charts
 - Flowcharts

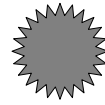
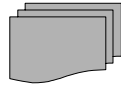
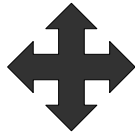


University of Florida Health Science Center

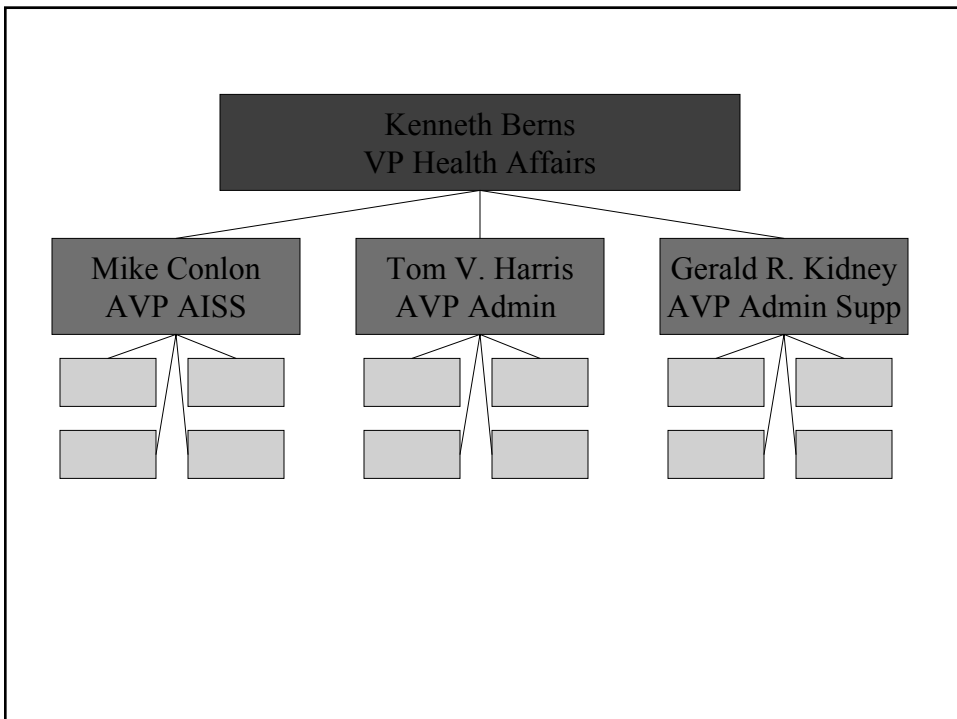
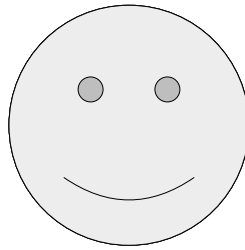


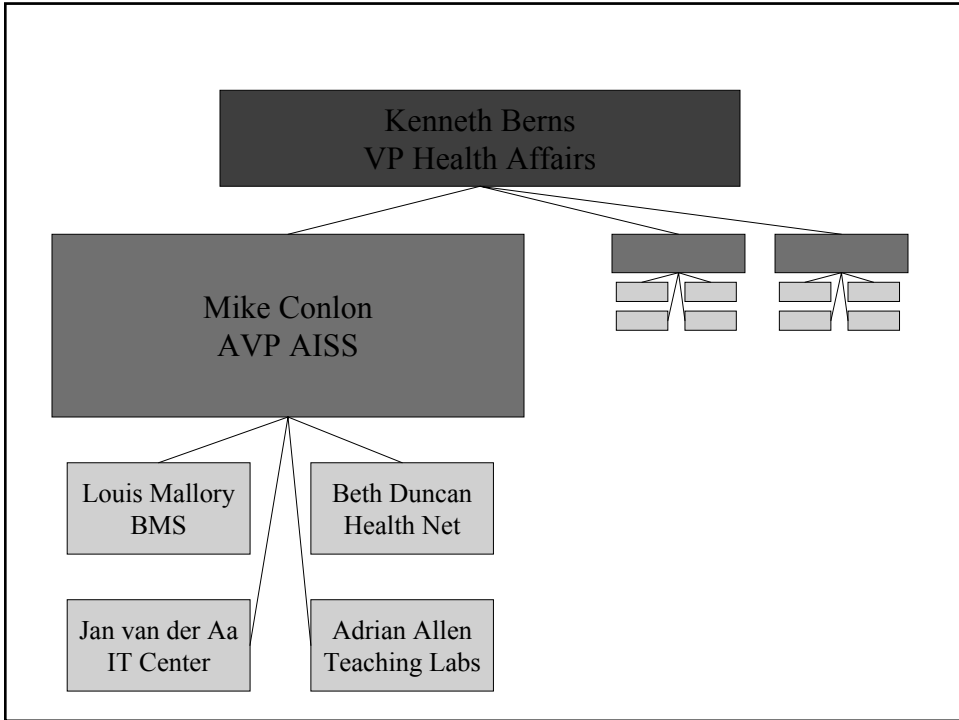
Create an Organizational Chart



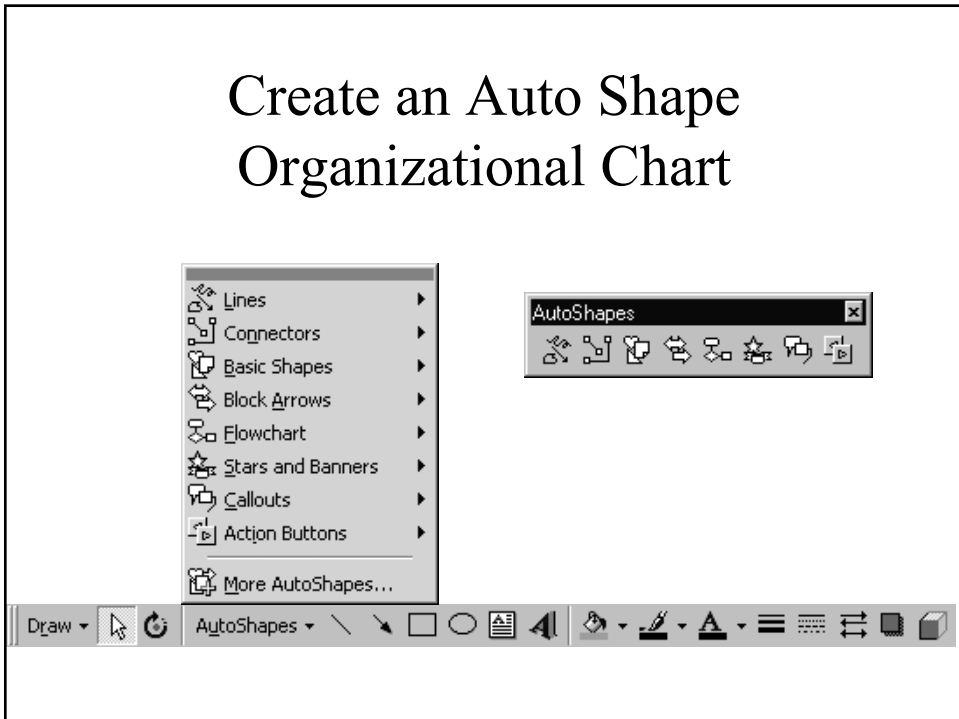


Using Auto Shapes

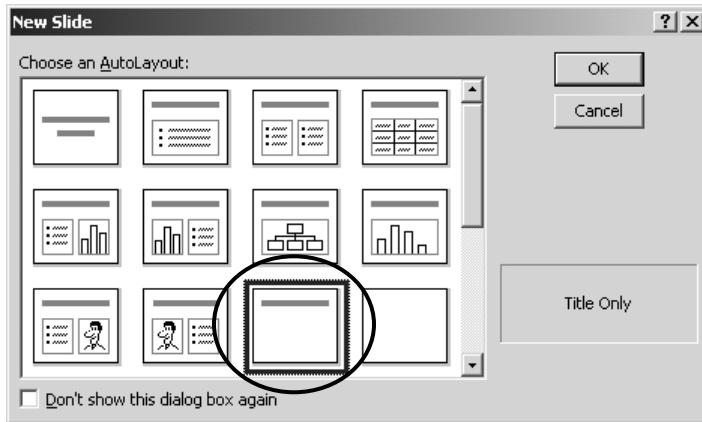




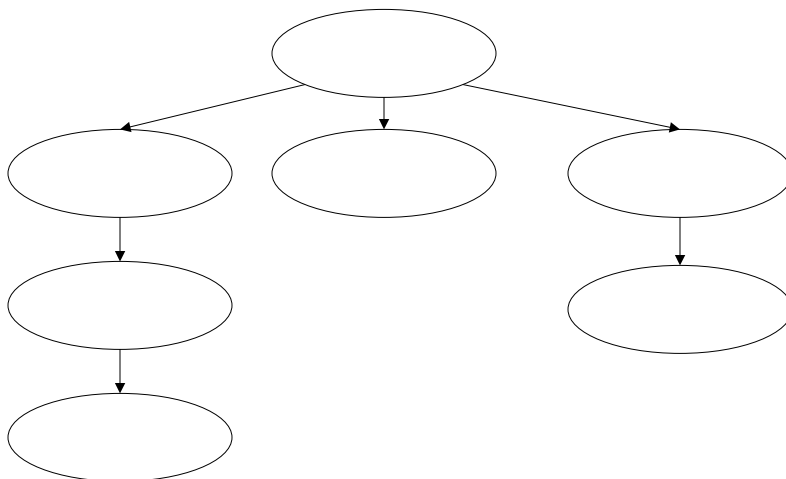
Create an Auto Shape Organizational Chart

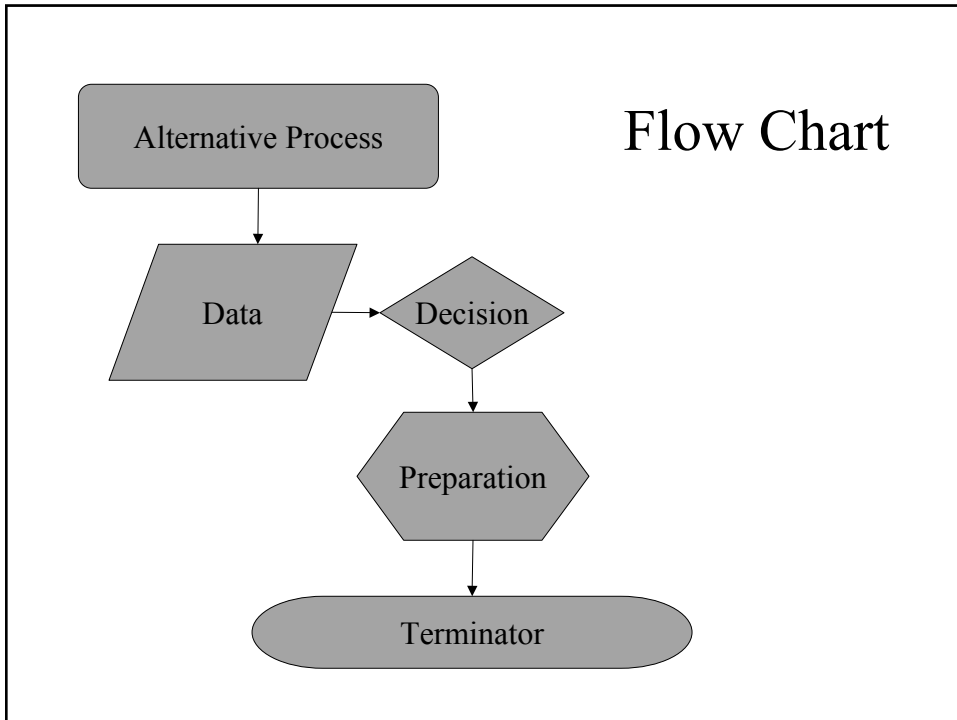


Create an Auto Shape Organizational Chart



Create an Auto Shape Organizational Chart





Charts and Graphs

- Table
- Chart
 - PowerPoint
 - Excel
- Organizational Chart
 - PowerPoint
 - Auto Shapes
 - Flowchart